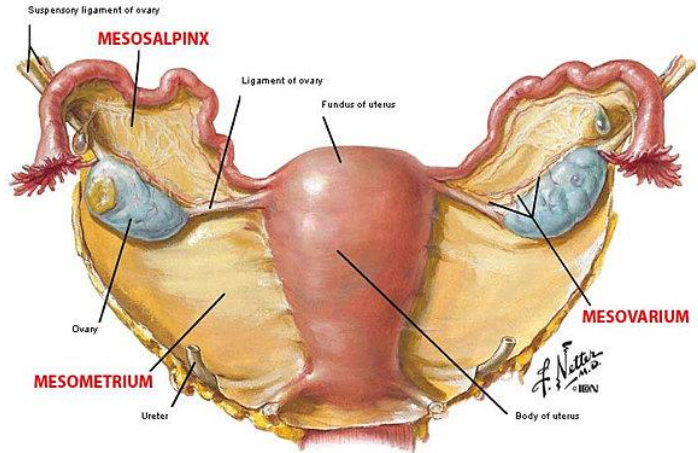


## UTERUS, INFLAMMATION OF THE

The symptoms in this difficulty are similar to those in inflammation of the bladder. There is, however, a sense of weight and pain that is not referable to the bladder, and which is caused by the swollen uterus.

**Treatment.**— The same as for inflammation of the bladder. In addition to this, however, give frequent cool vaginal injections.

*The uterus is a hollow muscular organ located in the female pelvis between the bladder and rectum. The ovaries*



*produce the eggs that travel through the fallopian tubes. Once the egg has left the ovary it can be fertilized and implant itself in the lining of the uterus. The main function of the uterus is to nourish the developing fetus prior to birth.*

*The Hygienic Family Physician: A Complete Guide for the Preservation of Health, and the Treatment of the Sick without Medicine, pg. 354 by M. G. Kellogg*